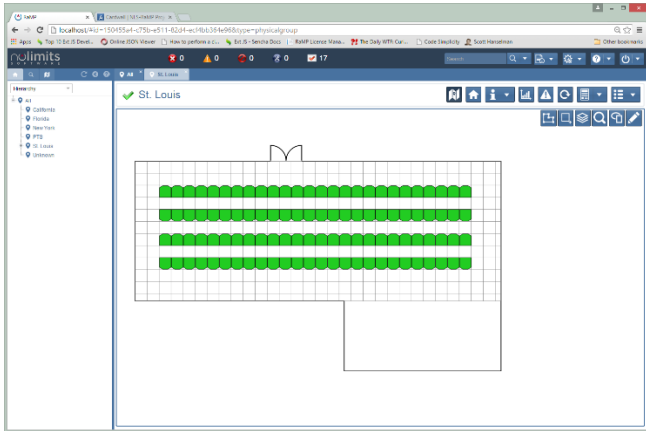


RaMP Asset

No Limits Software offers the quickest, easiest, and least expensive ways to get started with DCIM

While many data center managers can benefit from RaMP's full feature set – including server discovery and monitoring, tasks and workflow, asset management, automated network end to end connectivity, and monitoring via SNMP, Modbus, and BACnet – others simply want to be able to track their assets in the data center. **RaMP Asset** gives you the features you need at a price you can afford.

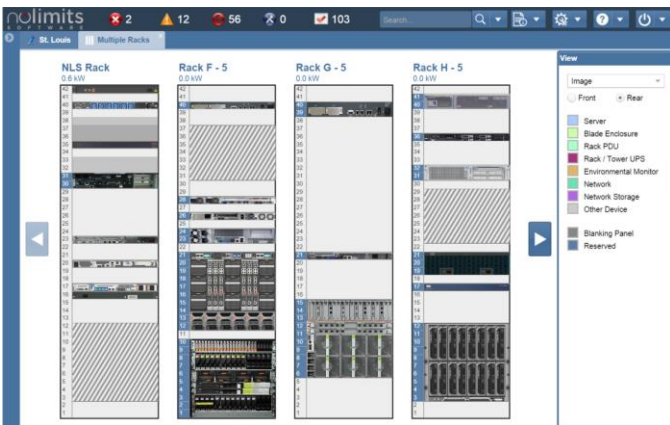
RaMP Asset allows you to manage your data center assets, from virtual machines to IT equipment (servers, storage, network) to facilities equipment (power, cooling). Lay out your data center with the easy to use editor. Populate the racks to provide rack level asset management. If you want to manage your power infrastructure, you can purchase **RaMP Power** to expand your capabilities



Easily lay out your data center view



Visual view of power chain



View multiple racks at the same time

Name	Location	Department	Manufacturer	Model
172.16.0.2	St. Louis == NLS Rack	Sales	HP	Unknown
172.16.0.4	St. Louis == NLS Rack	Sales	Supernode	IPM 2.2
172.16.0.5	St. Louis == NLS Rack	Sales	HP	ProLiant DL380 G6
172.16.0.6	St. Louis == NLS Rack	Engineering	HP	ProLiant DL380 G6
172.16.0.7	St. Louis == NLS Rack	Engineering	HP	ProLiant DL380 G6
172.16.0.8	St. Louis == NLS Rack	Engineering	HP	ProLiant DL380 G6
172.16.0.9	St. Louis == NLS Rack	Engineering	HP	ProLiant DL380 G6
172.16.0.10	St. Louis == NLS Rack	Engineering	HP	ProLiant DL380 G6
172.16.0.11	St. Louis == NLS Rack	Engineering	HP	ProLiant DL380 G6
172.16.0.12	St. Louis == NLS Rack	Engineering	HP	ProLiant DL380 G6
172.16.0.13	St. Louis == NLS Rack	Engineering	HP	ProLiant DL380 G6
172.16.0.14	St. Louis == NLS Rack	Engineering	HP	ProLiant DL380 G6
172.16.0.15	St. Louis == NLS Rack	Engineering	HP	ProLiant DL380 G6
172.16.0.16	St. Louis == NLS Rack	Engineering	HP	ProLiant DL380 G6
172.16.0.17	St. Louis == NLS Rack	Engineering	HP	ProLiant DL380 G6
172.16.0.18	St. Louis == NLS Rack	Engineering	HP	ProLiant DL380 G6
172.16.0.19	St. Louis == NLS Rack	Engineering	HP	ProLiant DL380 G6
172.16.0.20	St. Louis == NLS Rack	Engineering	HP	ProLiant DL380 G6
172.16.0.21	St. Louis == NLS Rack	Engineering	HP	ProLiant DL380 G6
172.16.0.22	St. Louis == NLS Rack	Engineering	HP	ProLiant DL380 G6
172.16.0.23	St. Louis == NLS Rack	Engineering	HP	ProLiant DL380 G6
172.16.0.24	St. Louis == NLS Rack	Engineering	HP	ProLiant DL380 G6
172.16.0.25	St. Louis == NLS Rack	Engineering	HP	ProLiant DL380 G6
172.16.0.26	St. Louis == NLS Rack	Engineering	HP	ProLiant DL380 G6
172.16.0.27	St. Louis == NLS Rack	Engineering	HP	ProLiant DL380 G6
172.16.0.28	St. Louis == NLS Rack	Engineering	HP	ProLiant DL380 G6
172.16.0.29	St. Louis == NLS Rack	Engineering	HP	ProLiant DL380 G6
172.16.0.30	St. Louis == NLS Rack	Engineering	HP	ProLiant DL380 G6
172.16.0.31	St. Louis == NLS Rack	Engineering	HP	ProLiant DL380 G6
172.16.0.32	St. Louis == NLS Rack	Engineering	HP	ProLiant DL380 G6
172.16.0.33	St. Louis == NLS Rack	Engineering	HP	ProLiant DL380 G6
172.16.0.34	St. Louis == NLS Rack	Engineering	HP	ProLiant DL380 G6
172.16.0.35	St. Louis == NLS Rack	Engineering	HP	ProLiant DL380 G6
172.16.0.36	St. Louis == NLS Rack	Engineering	HP	ProLiant DL380 G6
172.16.0.37	St. Louis == NLS Rack	Engineering	HP	ProLiant DL380 G6
172.16.0.38	St. Louis == NLS Rack	Engineering	HP	ProLiant DL380 G6
172.16.0.39	St. Louis == NLS Rack	Engineering	HP	ProLiant DL380 G6
172.16.0.40	St. Louis == NLS Rack	Engineering	HP	ProLiant DL380 G6
172.16.0.41	St. Louis == NLS Rack	Engineering	HP	ProLiant DL380 G6
172.16.0.42	St. Louis == NLS Rack	Engineering	HP	ProLiant DL380 G6
172.16.0.43	St. Louis == NLS Rack	Engineering	HP	ProLiant DL380 G6
172.16.0.44	St. Louis == NLS Rack	Engineering	HP	ProLiant DL380 G6
172.16.0.45	St. Louis == NLS Rack	Engineering	HP	ProLiant DL380 G6
172.16.0.46	St. Louis == NLS Rack	Engineering	HP	ProLiant DL380 G6
172.16.0.47	St. Louis == NLS Rack	Engineering	HP	ProLiant DL380 G6
172.16.0.48	St. Louis == NLS Rack	Engineering	HP	ProLiant DL380 G6
172.16.0.49	St. Louis == NLS Rack	Engineering	HP	ProLiant DL380 G6
172.16.0.50	St. Louis == NLS Rack	Engineering	HP	ProLiant DL380 G6
172.16.0.51	St. Louis == NLS Rack	Engineering	HP	ProLiant DL380 G6
172.16.0.52	St. Louis == NLS Rack	Engineering	HP	ProLiant DL380 G6
172.16.0.53	St. Louis == NLS Rack	Engineering	HP	ProLiant DL380 G6
172.16.0.54	St. Louis == NLS Rack	Engineering	HP	ProLiant DL380 G6
172.16.0.55	St. Louis == NLS Rack	Engineering	HP	ProLiant DL380 G6
172.16.0.56	St. Louis == NLS Rack	Engineering	HP	ProLiant DL380 G6
172.16.0.57	St. Louis == NLS Rack	Engineering	HP	ProLiant DL380 G6
172.16.0.58	St. Louis == NLS Rack	Engineering	HP	ProLiant DL380 G6
172.16.0.59	St. Louis == NLS Rack	Engineering	HP	ProLiant DL380 G6
172.16.0.60	St. Louis == NLS Rack	Engineering	HP	ProLiant DL380 G6
172.16.0.61	St. Louis == NLS Rack	Engineering	HP	ProLiant DL380 G6
172.16.0.62	St. Louis == NLS Rack	Engineering	HP	ProLiant DL380 G6
172.16.0.63	St. Louis == NLS Rack	Engineering	HP	ProLiant DL380 G6
172.16.0.64	St. Louis == NLS Rack	Engineering	HP	ProLiant DL380 G6
172.16.0.65	St. Louis == NLS Rack	Engineering	HP	ProLiant DL380 G6
172.16.0.66	St. Louis == NLS Rack	Engineering	HP	ProLiant DL380 G6
172.16.0.67	St. Louis == NLS Rack	Engineering	HP	ProLiant DL380 G6
172.16.0.68	St. Louis == NLS Rack	Engineering	HP	ProLiant DL380 G6
172.16.0.69	St. Louis == NLS Rack	Engineering	HP	ProLiant DL380 G6
172.16.0.70	St. Louis == NLS Rack	Engineering	HP	ProLiant DL380 G6
172.16.0.71	St. Louis == NLS Rack	Engineering	HP	ProLiant DL380 G6
172.16.0.72	St. Louis == NLS Rack	Engineering	HP	ProLiant DL380 G6
172.16.0.73	St. Louis == NLS Rack	Engineering	HP	ProLiant DL380 G6
172.16.0.74	St. Louis == NLS Rack	Engineering	HP	ProLiant DL380 G6
172.16.0.75	St. Louis == NLS Rack	Engineering	HP	ProLiant DL380 G6
172.16.0.76	St. Louis == NLS Rack	Engineering	HP	ProLiant DL380 G6
172.16.0.77	St. Louis == NLS Rack	Engineering	HP	ProLiant DL380 G6
172.16.0.78	St. Louis == NLS Rack	Engineering	HP	ProLiant DL380 G6
172.16.0.79	St. Louis == NLS Rack	Engineering	HP	ProLiant DL380 G6
172.16.0.80	St. Louis == NLS Rack	Engineering	HP	ProLiant DL380 G6
172.16.0.81	St. Louis == NLS Rack	Engineering	HP	ProLiant DL380 G6
172.16.0.82	St. Louis == NLS Rack	Engineering	HP	ProLiant DL380 G6
172.16.0.83	St. Louis == NLS Rack	Engineering	HP	ProLiant DL380 G6
172.16.0.84	St. Louis == NLS Rack	Engineering	HP	ProLiant DL380 G6
172.16.0.85	St. Louis == NLS Rack	Engineering	HP	ProLiant DL380 G6
172.16.0.86	St. Louis == NLS Rack	Engineering	HP	ProLiant DL380 G6
172.16.0.87	St. Louis == NLS Rack	Engineering	HP	ProLiant DL380 G6
172.16.0.88	St. Louis == NLS Rack	Engineering	HP	ProLiant DL380 G6
172.16.0.89	St. Louis == NLS Rack	Engineering	HP	ProLiant DL380 G6
172.16.0.90	St. Louis == NLS Rack	Engineering	HP	ProLiant DL380 G6
172.16.0.91	St. Louis == NLS Rack	Engineering	HP	ProLiant DL380 G6
172.16.0.92	St. Louis == NLS Rack	Engineering	HP	ProLiant DL380 G6
172.16.0.93	St. Louis == NLS Rack	Engineering	HP	ProLiant DL380 G6
172.16.0.94	St. Louis == NLS Rack	Engineering	HP	ProLiant DL380 G6
172.16.0.95	St. Louis == NLS Rack	Engineering	HP	ProLiant DL380 G6
172.16.0.96	St. Louis == NLS Rack	Engineering	HP	ProLiant DL380 G6
172.16.0.97	St. Louis == NLS Rack	Engineering	HP	ProLiant DL380 G6
172.16.0.98	St. Louis == NLS Rack	Engineering	HP	ProLiant DL380 G6
172.16.0.99	St. Louis == NLS Rack	Engineering	HP	ProLiant DL380 G6
172.16.0.100	St. Louis == NLS Rack	Engineering	HP	ProLiant DL380 G6

Create reports on the fly using advanced search capabilities

RaMP Asset benefits

- Application allows setup in minutes; purchase the optional installation package and we'll do all of the setup work for you
- Simple license model allows you to buy based on the number of racks
- Drag and drop features allow you to quickly place equipment in racks and make network and power connections
- Associate documents with any assets to track purchase orders, user guides, warranties, and so on
- Change log allows you to track all changes made to your assets
- Add more racks or move to the full RaMP version by simply upgrading your license