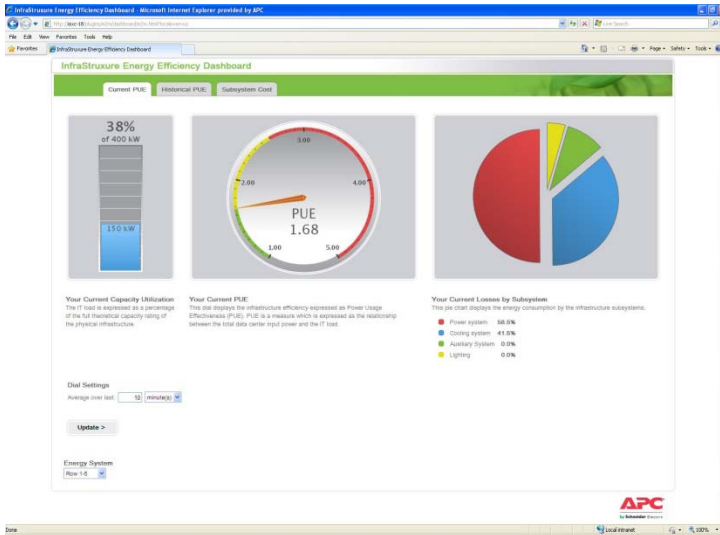
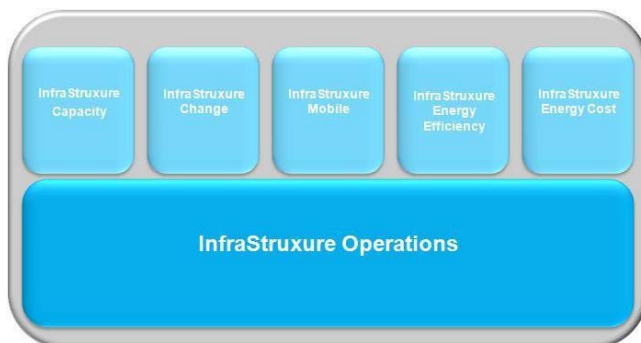


# InfraStruxure™ Energy Efficiency

Intelligent PUE analytics at subsystem level



Full insight into current and historical energy efficiency for facilities, identifying efficiency losses and enabling improved PUE values at subsystem level.



## Data Center Management Application for InfraStruxure Operations

InfraStruxure Energy Efficiency provides current and historical Power Usage Effectiveness (PUE) values, enabling a fact-based understanding of how much power is devoted to driving the installed IT-equipment compared with the total facility consumption.

It provides a detailed insight into how effectively energy is utilized down to subsystem level, as well as an understanding of how to improve energy efficiency. Subsystem data can either be measured or estimated, also allowing customers with few power meters to benefit from the application.

The web-based dashboard view includes efficiency data on current and historical PUE, as well as detailed subsystem cost analysis. InfraStruxure Energy Efficiency is available via InfraStruxure Operations, which enables integrations with InfraStruxure Central and 3<sup>rd</sup> party enterprise systems.

Application for InfraStruxure Operations - complete multi-vendor management of the data center physical infrastructure



For More Information:  
(866) 787-3271  
Sales@PTSdcs.com



# Features & Benefits

Energy Efficiency Analysis	Benefits
Energy efficiency analysis	Provides current and historical PUE values based on the current IT-load for a fact-based understanding of energy efficiency at the facility level.
Subsystem losses	Provides insight into energy losses and cost of energy at subsystem level, providing details of which subsystem draws the most costs.
Carbon footprint	Shows the CO <sub>2</sub> footprint for each energy sub-system, for instant measurement of impact on the environment.
No measured data required	Utilizes measured or modeled data, allowing for usage with few or no power meters.
Reporting Capabilities	Benefits
PUE report	Provides a report on current & historical PUE values, showing the effect of changing seasons and suitable for both internal and external display.
Ease of use	Benefits
Web-enabled interface	Created for easy integration with 3rd party web page through application programming interface (API).
Easy deployment	Reduced installation time and costs with a minimum number of power meters required for deployment
Integration	Benefits
Multi-vendor data integration	Enables integration with 3rd party enterprise and building management systems, such as TAC by Schneider, for data gathering , customization and integration of PUE calculations.

## Prerequisites:

**Monitoring - InfraStruxure Central**  
**Operations - InfraStruxure Operations**

For further information; <http://www.apc.com/products>



For More Information:  
 (866) 787-3271  
 Sales@PTSdcs.com



by Schneider Electric