

InfraStruxure™ Operations

Integrated inventory management for full overview of data center operations



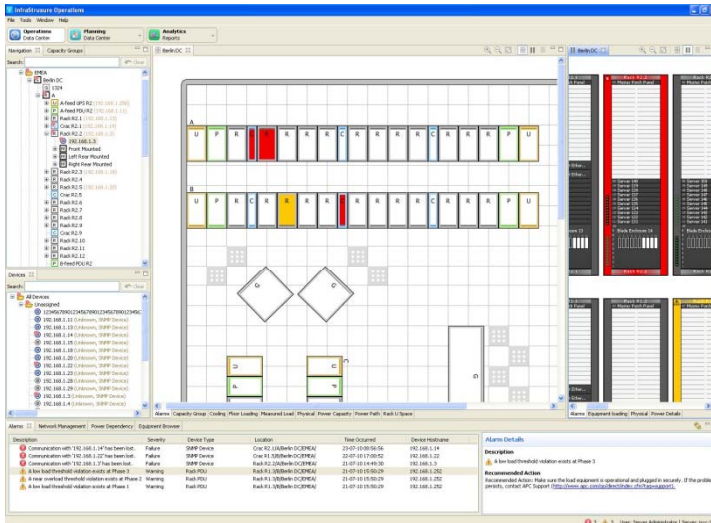
Data Center Management Application for InfraStruxure Central

InfraStruxure Operations enables vendor-agnostic inventory management with real-time device failures and data shown within your data center physical layout, as well as recommendations on how to resolve issues.

A location-based drill-down view provides a structured overview of data center locations, from a global to local view down to single assets.

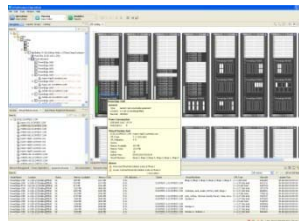
The Power Usage Effectiveness (PUE) calculator supplies information on daily utilization of energy.

For instant updates on the go InfraStruxure Mobile provides access to InfraStruxure Operations information via handheld PDA.



Instant overview of data center operations through inventory management, PUE calculator, real-time device alarms, and location-based drill-down

New! InfraStruxure Operations PRO Pack for integration with Microsoft System Center Virtual Machine Manager 2008



Provides insight into how virtual machines relate to physical servers and their location, automatically migrating virtual machines to secure host environments enabling customers to maintain Service Level Agreements and view and manage network health.



For More Information:
(866) 787-3271
Sales@PTSdcs.com



Features & Benefits

Inventory Management	Benefits
Inventory management	Shows device data within the physical layout for instant access to device details and asset attributes, and overview of data center operations.
Alarms within physical layout	Provides real-time device failures within floor layout and rack front view for status of data center operations
PUE Calculator	Provides Power Usage Effectiveness (PUE) value for information on daily utilization of energy
Graphical network management	A graphical overview of the data center network paths and their interconnections.
Mobile data center operations	Integrates with InfraStruxure Mobile for access to the InfraStruxure Operations application on the go via the Motorola (Symbol) MC70 handheld PDA
Recommended actions	Providing descriptions of problems together with recommended actions reduces the need of training, eases deployment and speeds troubleshooting.
Reporting Capabilities	Benefits
Inventory report	Includes detailed information on all rack-mount devices, organized by device type, age, manufacturer and properties for quick overview of all current devices within a data center.
Agility	Benefits
Customizable view	Provides location-based drill-down for a logical model of the data center, where data center rooms can be organized under regions, countries, campus, sites, buildings and rooms.
Blade server support	Mirror the exact data center setup, by modeling blades within their blade enclosures.
Virtual store room	Keep track of new devices from arrival on site in the virtual store room, as best practices recommend.
Model any data center	Capable of modeling data centers and rooms with rows in any direction
Application scalability	Supports up to 1,000 racks and 50,000 IT assets, including 30 associated custom properties per asset.
Localization	User interface available in major local languages

Prerequisites:

Monitoring - InfraStruxure Central

For further information; <http://www.apc.com/products>



For More Information:
(866) 787-3271
Sales@PTSdcs.com



by Schneider Electric