

MGE Galaxy PW

Three Phase UPS

150 / 180 / 200 / 225 kVA



Performance 3 Phase Power Protection with Adaptability to Meet the Unique Requirements of Small to Medium Datacenters, Building and Facilities

- > Flexible and very adaptable
- > Strong electrical features
- > Intuitive monitoring
- > Parallel capable Output
- > High availability architectures components



For More Information:
(866) 787-3271
Sales@PTSdcs.com



MGE Galaxy PW Redefining Power Quality

Simple and secure paralleling technology

- > Paralleling technology for redundancy or capacity simply by using the output of the modules together
- > Up to 3 modules paralleled for capacity
- > Up to 4 modules for redundancy
- > Easy cable landing facilitated by a system level wrap around maintenance bypass
- > System level maintenance bypass provided
- > Internal maintenance bypass on each UPS module

No additional paralleling gear required!



Upgradeable Power Levels

- > Field upgradeable up to 225 kVA
- > Extra power needed provided without the expense of added equipment or installations costs

User Friendly Interface

- A black-lit, wide-angle graphic display allows clear messages presenting detailed information on diagnostics and UPS status
- > Event log for all alarms and events including UPS and battery lifecycle data
 - > LED Mimic Diagram
 - > Battery and UPS Cycle Monitor
 - > Self Diagnostic Report



MGE Galaxy PW Features

Critical Bus Synchronization

The CBS module keeps the outputs of 2 UPS modules in sync with each other under all operating conditions

- > The ideal solution for architecture requiring a very high degree of availability: Epsilon STS
- > A dual-supply server supplied via 4 different routes
- > Redundancy ensured at every level: PDU, Epsilon STS, UPS and synchronization module

Generator Friendly Technology

- > Leading power factor limited on the input
- > Need for costly generator oversizing eliminated
- > Common UPS generator culpability issues eliminated
- > Passive Inductors / Caps, no hard switching of capacitors to maintain lagging / near lagging power factor
- > Low THDI, no excessive heating / de-rating of alternator

Parallel Systems

- > System Bypass Cabinet
- > 350, 700 and 1200A CBs available (key interlock standard)
- > Remote installation only (non-matching dimensions)
- > System level power monitoring only included

Integrated Battery Diagnostics

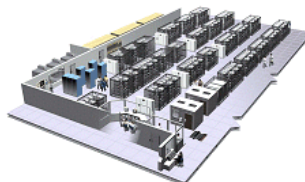
- > Integrated battery diagnostic system
- > Periodic battery health test automatically performed
- > Operators to irregularities alerted before to have a chance to affect UPS performance

Digital Power Quality Management

- > Digital Power Quality technology
- > Output wave form compared to a computer simulated wave form
- > Any imperfections immediately corrected using tiny sub-cycle pulses
- > A pure sine wave output maintained under all load conditions

Communications Options

- > Dry Contact Relay Card (5 dry contacts) standard
- > Web/Network Management Card (SNMP)
- > RS485 / RS232 Serial Communications Card
- > MultiSlot Communications Card Expander
- > IBM AS/400 Volt-Free Contact/Remote Power off Card



Technical characteristics

UPS Rating kVA/KW	150/135	180/162	200/180	225/202.5
Input				
Voltage (V)	208,480V Three phases,3W + G			
Frequency (Hz)	60Hz (+-10%)			
Nominal Input Current at 208V (A)	485	600	692	692
Input THDI	<7.5% at 100% load			
Output				
Voltage	208,480V Three phases,3W + G			
Power Factor	>0.9			
THDV (linear loads)	< 1.5% Ph/Ph, < 2.0% Ph/n			
THDV (non-linear loads)	< 2.0% Ph/Ph, < 3.0% Ph/n			
Voltage Transient Response (at 100% Step Load):	+/- 2%			
Nominal Output Current at 208V (A)	418	501	556	625
Inverter Overload Capacity (A)	150% for 1 minute,125% for 10 minute			
Bypass				
Bypass Instant Overload (1 cycle):	22 times nominal current			
Overall efficiency				
Systems Efficiency at 100 %load	93%	93%	93.5%	93.5%
Full Load Heat Rejection (BTUs)	57,301	68,762	72,477	73,383
Environmental				
Operating Temperature	UPS: 0° to 40°C (32°F to 104°F)			
Storage Temperature	-20°C to +45°C (-4°F to 113°F)			
Relative Humidity	0 to 95% non-condensing			
Audible Noise (dBA)	68			
Dimensions and Weights				
UPS Module Weight (lbs)	3050lbs.			
Module Dimensions	75"H x 33" D x 48" W			



For More Information:
 (866) 787-3271
 Sales@PTSdcs.com

